

## Using the Camera with OTNhub Videoconference



- 1 Connect the lens to the camera** device. Ensure that the dots match up and turn the locking ring in a clockwise direction.
- 2 Connect the USB cable to the computer.** Check that you are using a USB 3.0 connection.
- 3 White balance the camera** by pressing the WB button. Ensure that the light is on and the camera is pointed at a white card/paper.
- 4 Log in at [otnhub.ca](http://otnhub.ca),** go the Videoconference service and connect to the desired system.
- 5** On the videoconference toolbar, click the **Settings** icon (⚙️), and select the appropriate peripheral camera.
- 6 Position the camera** and use the FF button to capture a static image. To return to the live camera feed, press the FF button.
- 7** To return to the room view, in the video window's toolbar, click the **Settings** icon (⚙️) and click on the main camera.

For further assistance and technical support, contact OTN Technical Support:

Phone: 1-855-654-0888 (option 2) Email: [techsupport@otn.ca](mailto:techsupport@otn.ca)



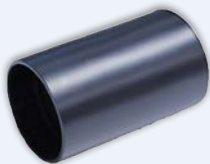
## Available Lenses & Attachments

### General Viewing

General viewing lens



Derm hood



Tongue depressor adaptor



Tongue depressors (Quantity 5)



Touch collars (Quantity 5)



### Otoscope

Otoscope lens



Welch Allyn specula (Quantity 5)



### Variable Polarizing Hood

For use with general viewing lens



For further assistance and technical support, contact OTN Technical Support:

Phone: 1-855-654-0888 (option 2) Email: [techsupport@otn.ca](mailto:techsupport@otn.ca)

