



For more information about the Teleophthalmology Program, please contact your Teleophthalmology Coordinator.

### About OTN

As the world leader in telemedicine, OTN is helping to bring more patients the care they need, where and when they need it. Using innovative technology, OTN tries to streamline the healthcare process, eliminating unnecessary travel and giving patients better access to their doctors and other healthcare professionals. OTN also facilitates the delivery of distance education and meetings for health care professionals and patients. OTN is making healthcare work smarter, not harder.

For more information, please visit [www.otn.ca](http://www.otn.ca).



**otn.teleophthalmologySF<sup>®</sup>**

## Introducing OTN's Teleophthalmology Program For Retinal Screening

### Moving the information, not the patient

As a primary care provider, imagine having an image taken and sending it to an ophthalmologist, and getting a diagnosis—all without a long wait, added stress or extensive travel time for your patient. As an ophthalmologist, imagine sitting down and reviewing images sent remotely and providing online assessment, diagnosis and/or treatment recommendations—from your own office, on your own schedule. OTN's Teleophthalmology program will make this happen — by moving the information, not the patient.

OTN's Teleophthalmology program supports primary health care by providing timely access to specialists for consultations that require visualization of an image. Ophthalmologists will advise primary care providers regarding how often to refer patients for screening, or when treatment is required.

### How it works

The referring physician sends patients for retinal screening at a teleophthalmology site. The images are placed on a secure server. The data is then securely forwarded or “uploaded” to an ophthalmologist for assessment, diagnosis and/or treatment recommendations. >>

## The Goal

The Teleophthalmology program is designed to evaluate models for improving access to retinal screening for patients with diabetes in Ontario.

## The Participants

A small group of primary care providers is involved in Teleophthalmology. They will identify diabetic patients and refer them for retinal photographs taken by a trained photographer at screening sites. A local ophthalmologist will review the images and provide a report to the primary care providers.

## Technology

Teleophthalmology uses a secure web-based connection and software to allow referring and consulting healthcare providers to capture and review digital images of the retina. Strong safeguards including usernames, passwords and data encryption ensures the safety and privacy of patient health information. Patients will also undergo visual acuity assessment and have their eye pressure measured.

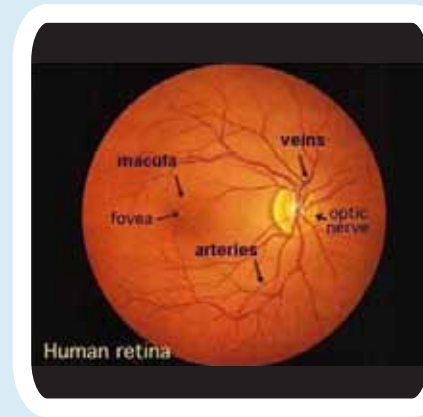
## The Benefits

Ophthalmology is well suited for telemedicine. Key benefits of the Teleophthalmology program include:

- Improved access to, and rates of retinal assessment and follow-up for, patients with diabetes.
- Improved efficiency of retinal assessment services, optimizing the effective use of vision health care resources.
- Reduced travel burden on patients and families (i.e., reduce unnecessary referrals and visits to eye consultants).

## Step 1: Referring Physician

The referring physician sends the patient for retinal screening at a Teleophthalmology site.



## Step 2: Digital Image

The digital images are “stored” on a secure server.

## Step 3: Consultants

The data is then securely forwarded or “uploaded” to an ophthalmologist for assessment, diagnosis and/or treatment recommendations.

